



ISO 7396-1 : 2016

ISO 13485 : 2016

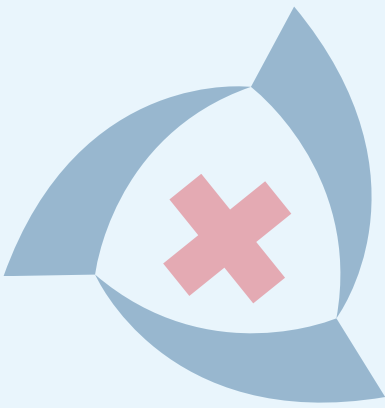
ISO 7396 -2 : 2016

CE CERTIFIED

MSME CERTIFIED

CDCSO APPROVED





**ATPL**  
(Medical Equipment & Supply)

# CONTENT

1. Company Profile
2. Vision And Mission
3. Medical Gas Control & Automatic Change Over
4. Cylinder Header Frame
5. Medical Alarm System
  - \* Digital Gas Alarm System
  - \* Analogue Gas Alarm System
6. Area Valve Service Unit
  - \* Top Entry (AVSU)
  - \* Compact Multi Valve Avsu
7. Medical Gas Outlets
8. Medical Oxygen Flow meters
  - \* Vacuum Regulator And Suction Devices
  - \* Theater Suction Trolley
9. Bed Head Panels
  - \* Horizontal Bed Head Panels
  - \* Vertical Bed Panels
10. Accessories
  - \* Monitor Tray
  - \* Regulators
  - \* Plastic Shaddles/ ISOLATION VALVES/ Brass Fitting
  - \* Copper Fittings/ SS Basket/ NRV/ Copper Tail Pipe
  - \* Flexible Tail Pipe/ Tubing For Medical Gas

# COMPANY PROFILE

AROSONS TOOLS PVT LTD(Formerly AROSONS PRODUCT) is one of the leading Manufacturers and supplier of MEDICAL GAS PIPELINE EQUIPMENT(MGPS). Our products are designed to deliver consistent and reliable performance to the highest quality standard and leaving no room for complain.

Our prime strength lies in providing a comprehensive Range of MGPS product that meet the highest standard safety and Efficiency.Our specialized MGPS product include a wide array of medical gas Pipeline system designed for various healthcare environment We are an iso 9001:2015 certificate company, complying with the Medical Device Quality management system(QMS)

ISO 13485:2016 standards.Out product also meet international Quality standard and are CE Certified.Our Company Arosons tools pvt ltd (Formely AROSONS PRODUCT) has been focusing on increasing client profit from past 20 years of our business operation.

For Our Enterprises clients are the biggest priority.We strive to present ourselves as the best manufacturer,exporter and supplier they can work with and successfully manage to meet their expectations with speed without compromising the quality.



# MEDICAL GAS CONTROL & AUTOMATIC CHANGE OVER

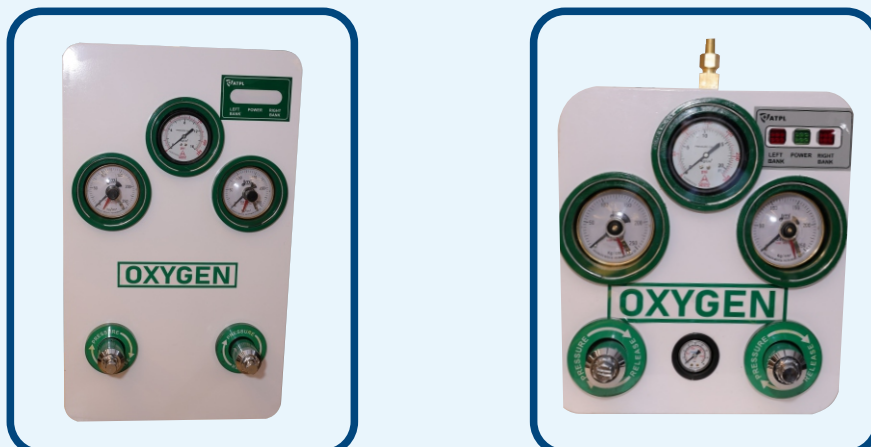
## Fully Automatic Control Panel



Medical Gas Control And Automatic Change Over Automatic Control Panel Is Attached To 2-4 Banks Having Multiple Gas Cylinders. Automatic Control Panels System Contains Analogue Pressure Meters For Displaying Pressure Of Each Incoming Bank And Main Line Gas Pressure.

As Soon As The Gas In One Bank Runs Below Set Pressure, it Sounds An Alarm And Switched To Other Bank, specific Colour Led Lights Indicate Bank In Use And The Bank On Standby. this Device Also Indicate Weather The Pressure Is Low Or Normal Along The Bank And The Mains.

## Semi Automatic Control Panel



# CYLINDER HEADER FRAME



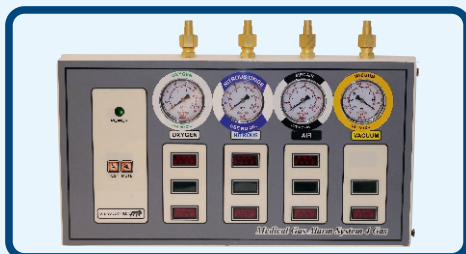
# MEDICAL GAS ALARM SYSTEM

## Digital Gas Alarm



Medical Gas Alarm System (Digital And Analogue Alarms System) Come In 1,2,3,4,5 And 6 Gas Categories Where The Number Indicate The Number Of Gases The System Can Handel. These System Measures The Pressure Of The Different Gasses Coming For The Pipe Lines And Display The Measured Levels On Panel In Psi Or Bar. (Manual Meters In Analogue Alarms). In Case Of Low Pressure It Generates Appropriate Alarm.

## Analog Gas Alarm System

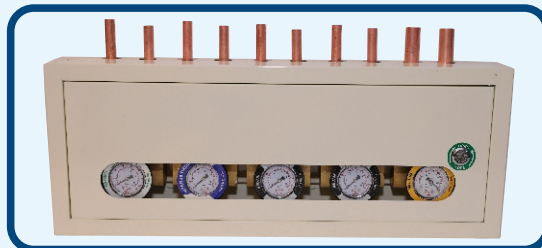
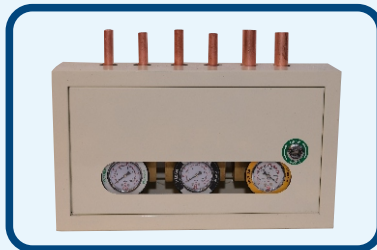
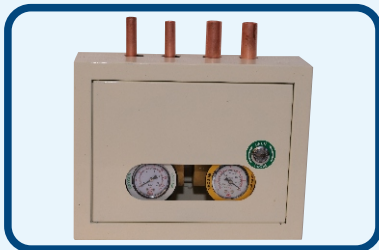


# AREA VALVE SERVICE UNIT



Area Valve Service Units are mainly used in medical gas pipeline systems of individual zones without disturbing the gas flow to other zones. In case of emergencies, an area valve service unit can also be used for the shutoff of gas distribution to individual zones. A single box can hold from 1-6 valves, allowing control of 6 gas types of gases.

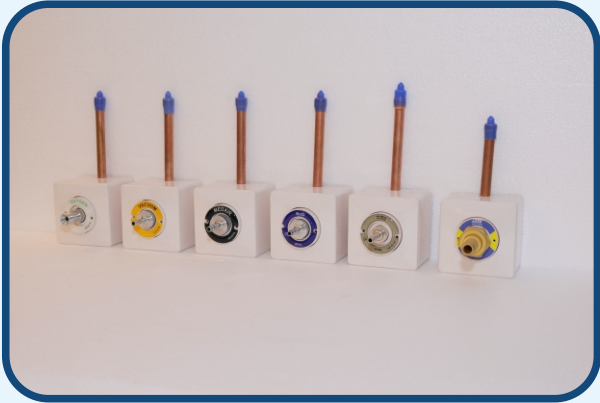
## Top Entry Avsu



## Compact Valve Avsu

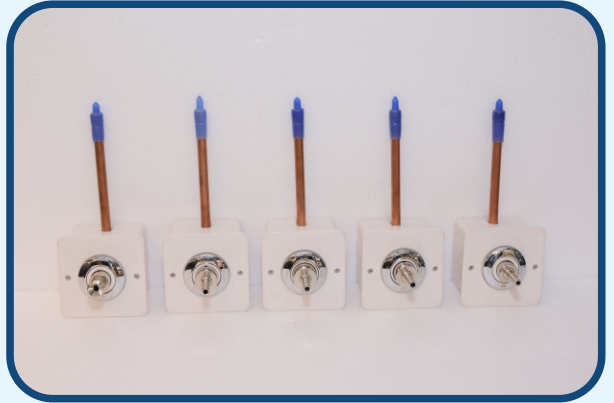


# MEDICAL GAS OUTLETS



**British Standar Compatible Outlets  
(Plastic)**

---



**British standard compatible outlets  
(Metal)**

---



**Parkodex Compatible Outlets**

---



**Puritan-Bennett Compatible Outlets**

---



**Fusion Compatible Outlets**

---

## MEDICAL OXYGEN FLOW METERS



## VACUUM REGULATOR AND SUCTION DEVICES

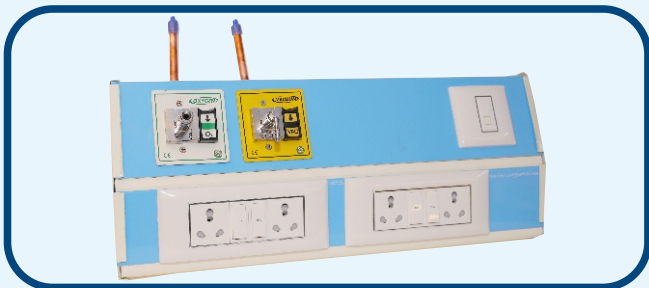
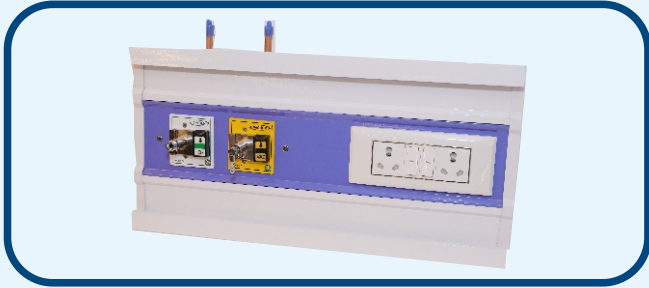


## THEATER SUCTION TROLLEY



# BED HEAD PANEL

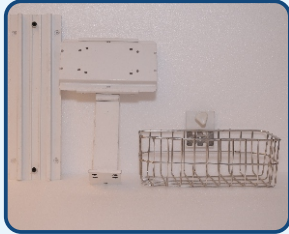
## Horizontal Bed Head Panel



## Vertical Bed Head Panel



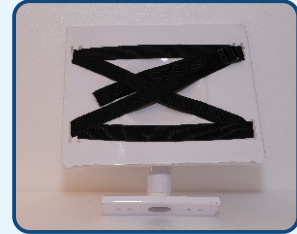
# ACCESSORIES



**Sliding Monitor Tray**



**Panel Mount Monitor Tray**



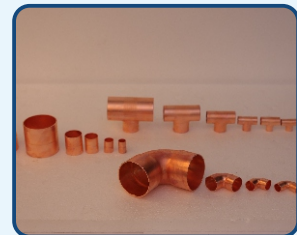
**Wall Mount Monitor Tray**



**Brass Fittings**



**Isolation Valves**



**Copper Fittings**



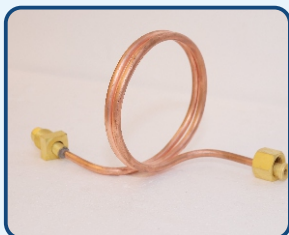
**Plastic Saddle**



**SS Basket**



**Tubing For Medical Gas**



**Copper Tail Pipe**



**Flexible Tail Pipe**



**NRV**



**Mox Regulator**



**Piston Type Iox-14 Regulator**







# ATPL

( Medical Equipment & Supply)

Head Office & Manufacturing Unit  
Plot No. 32, Friends Colony,  
Sohna Road, Ballabgarh-121004

Contact Details  
Mob. : 8766225884, 9625463635

E-mail : [arostonstoolspvtltd@gmail.com](mailto:arostonstoolspvtltd@gmail.com)  
[sajalarora1975@gmail.com](mailto:sajalarora1975@gmail.com)

Web site : <https://atplmedicalequipments.com/>



Web site